



Transshipment Capacity Modeling

Linden Clarke

Sydney | August 2024



Introduction

Export 10 Mtpa

- Port of Albany, Western Australia
- Cape vessels 300m LOA, 18m draft)
- New berth & expanded channel

Export 5 Mtpa

- Transshipment
- Load Cape vessels in King George Sound
- Reduce startup time & capital cost



Project

Objectives

- Is 5Mtpa by transshipment feasible?
- What equipment?
- Capex and Opex cost?

Overview

- 90km pipeline from mine to port
- Dewatering at Port
- Port stockpile
- Load transhipper vessel (TSV)
- Load ocean-going-vessels (OGV) 2 stages

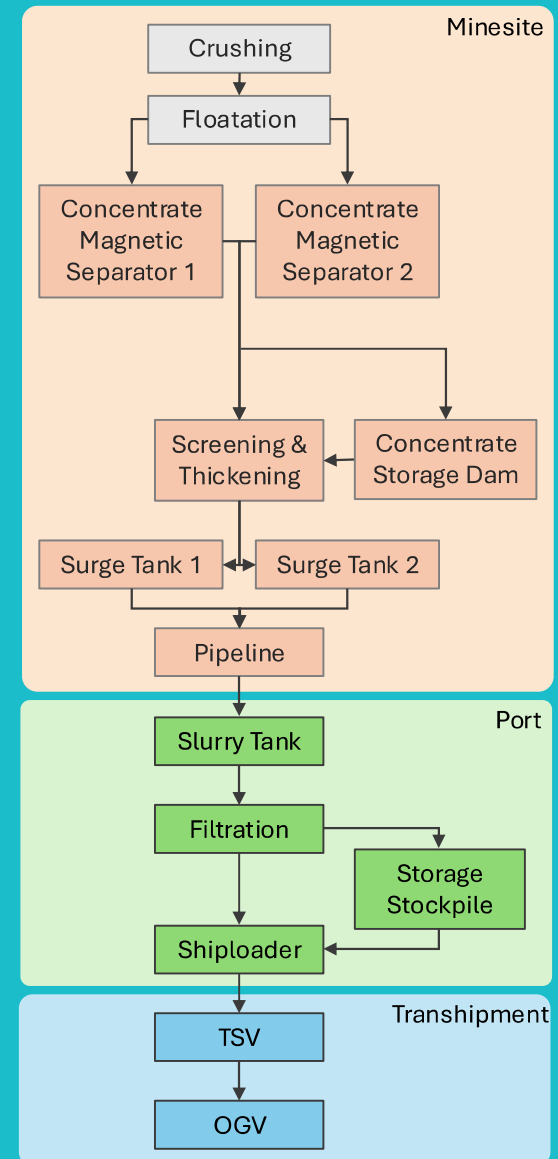


Pit to Ship Logistics

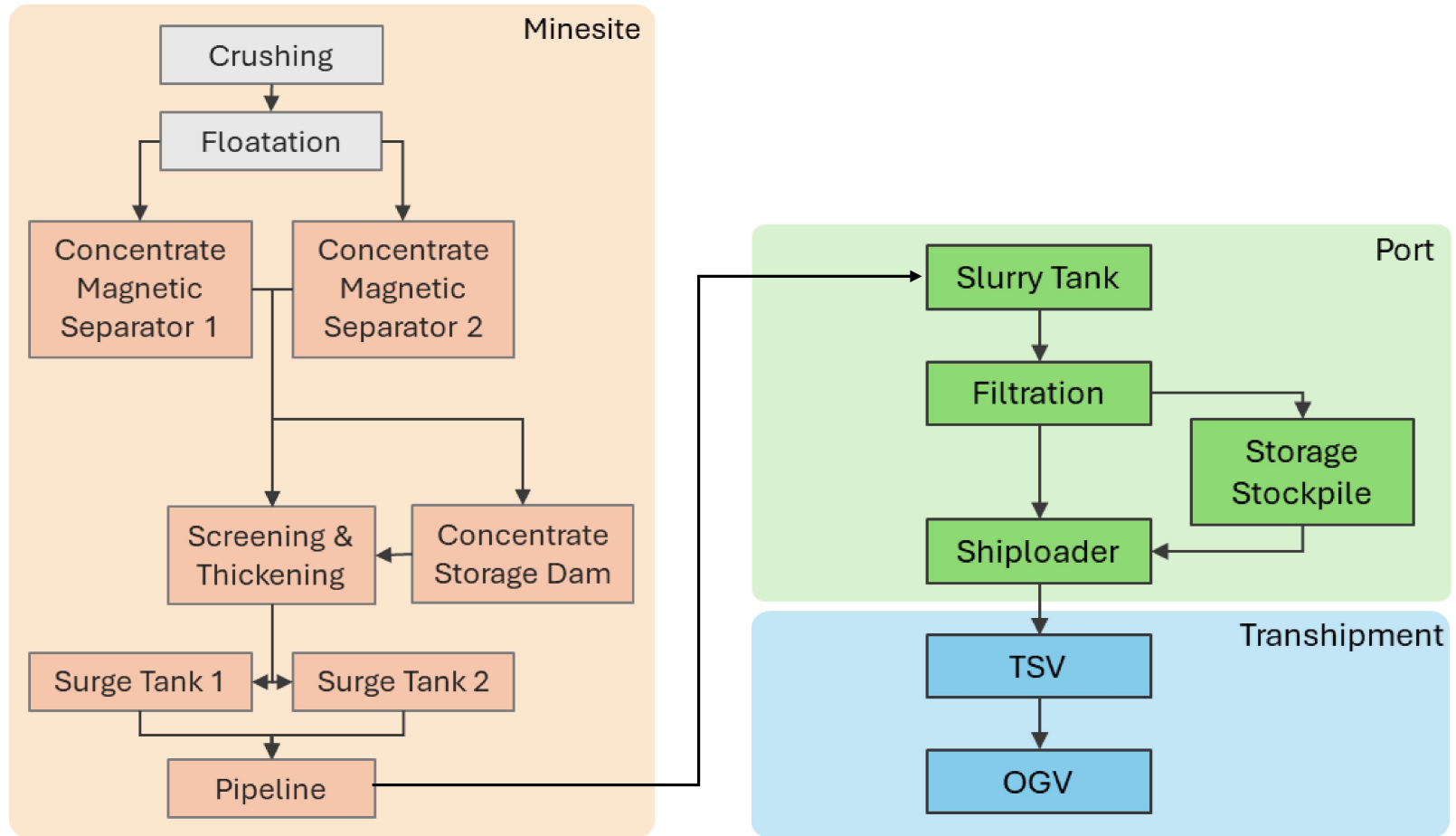
- Minesite
- Port
- Transshipment
- Response of the whole system difficult to predict

Model Purpose

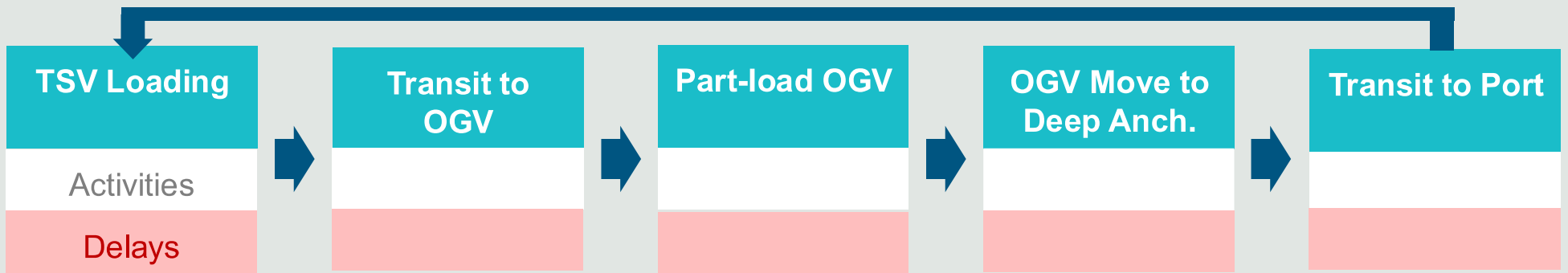
- Select equipment
- Identify bottlenecks
- Quantify throughput capacity



Pit to Ship Logistics

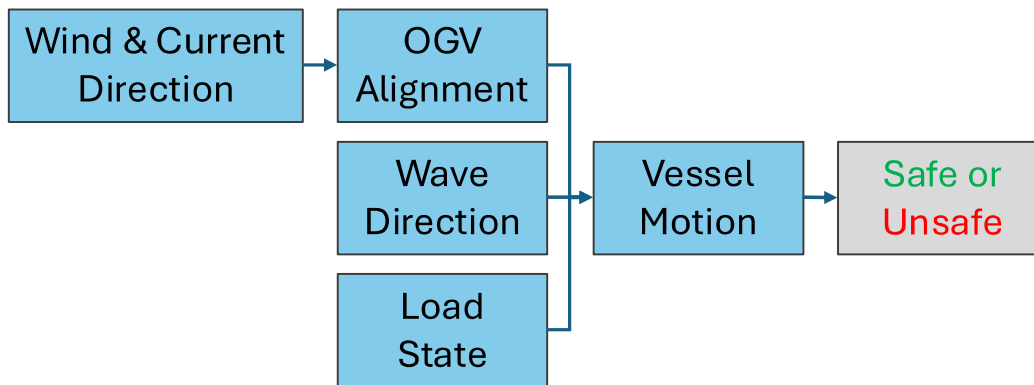


Transshipment Cycle

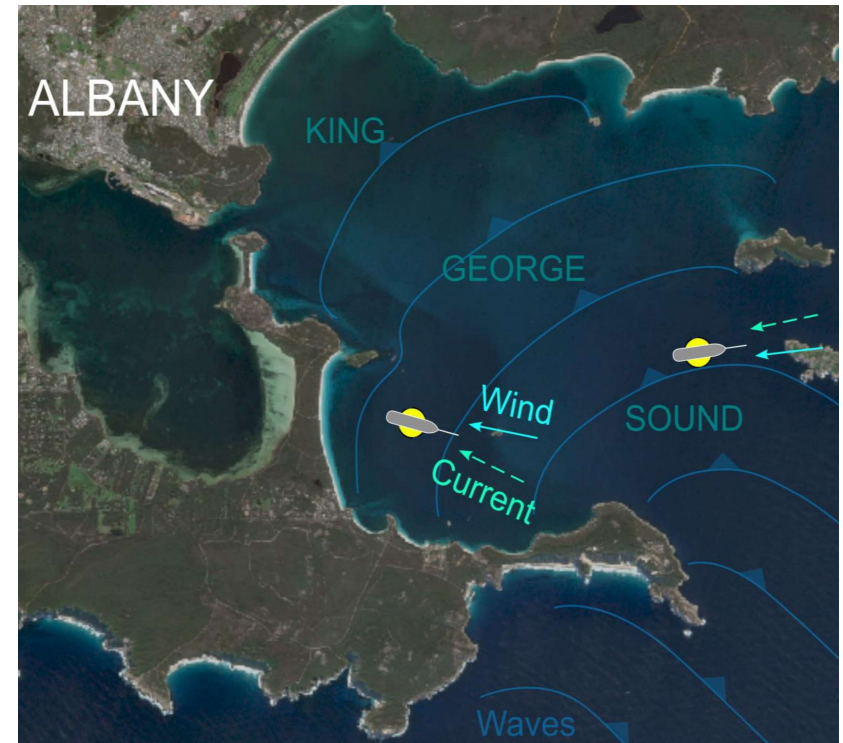


Transshipment Operability

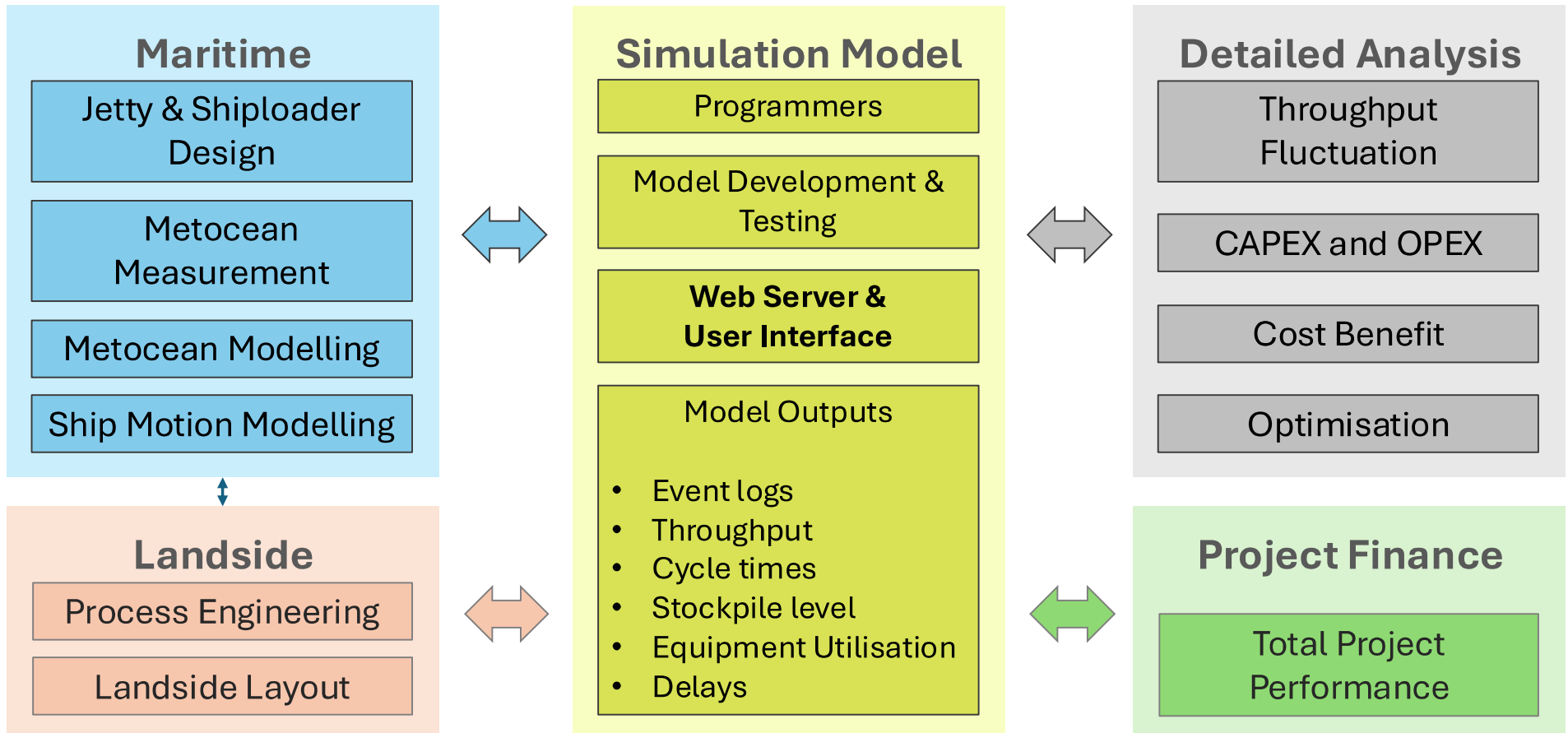
Metoccean Conditions & Ship motions



- Measured wind, waves & currents
- Calibrated numerical models
- 10 year hindcast of conditions at anchorages
- Conditions assessed at model run-time



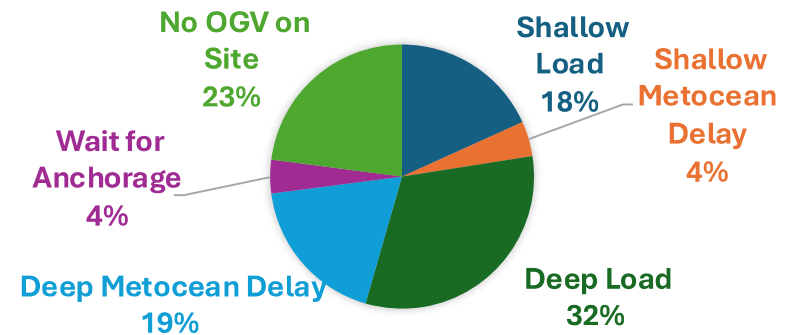
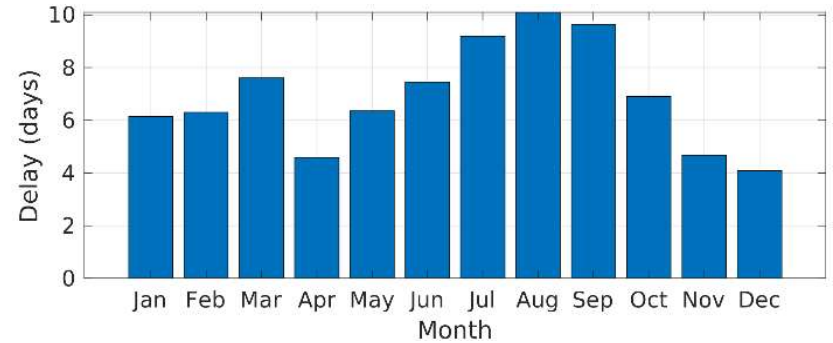
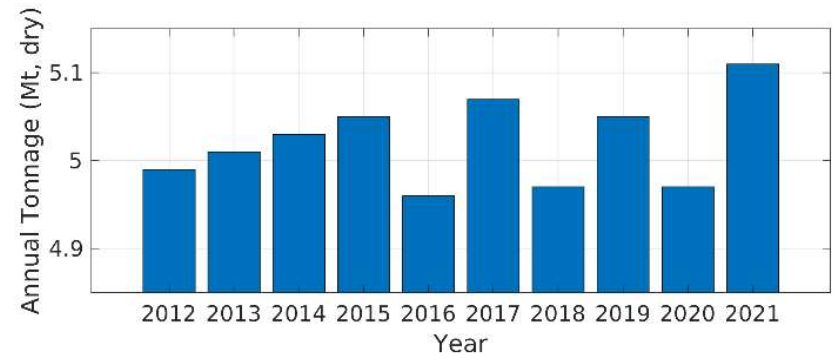
Project Team



Analysis

Key Performance Metrics

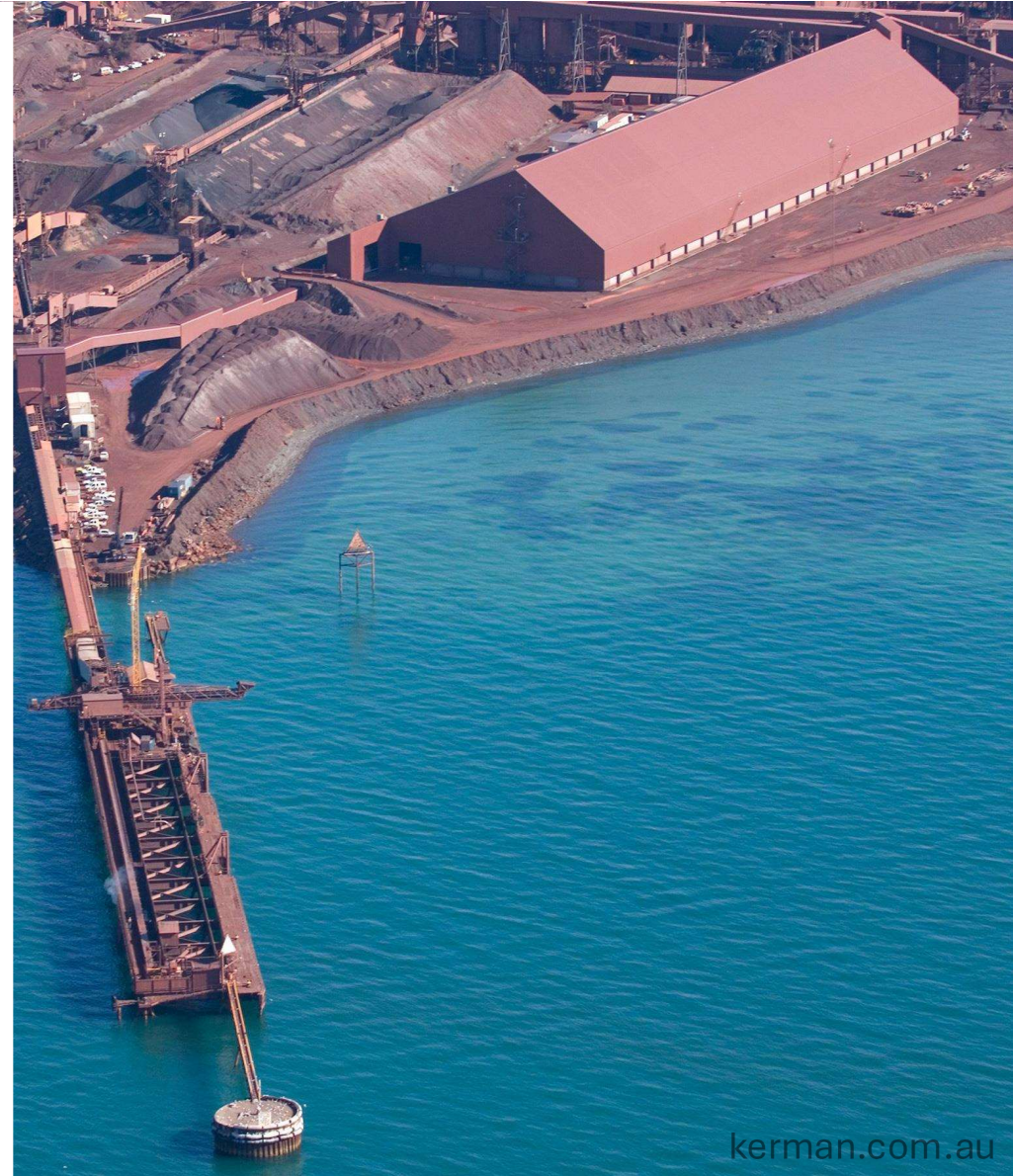
- Export target of 5Mtpa achieved?
- Throughput variability
- Cycle times variability
- Equipment utilisation
- Quantified Delays
 - Concentrate availability
 - Metocean conditions at anchorage sites
 - Upstream supply interruptions
- Port stockpile levels – upstream impacts



Questions Answered

Preferred Equipment

- TSV – capacity and material handling ✓
- OGV – capacity and arrival schedule ✓
- Stockpile – size & reclaim equipment ✓
- Shiploader – type and rate ✓
- Landside process components ✓



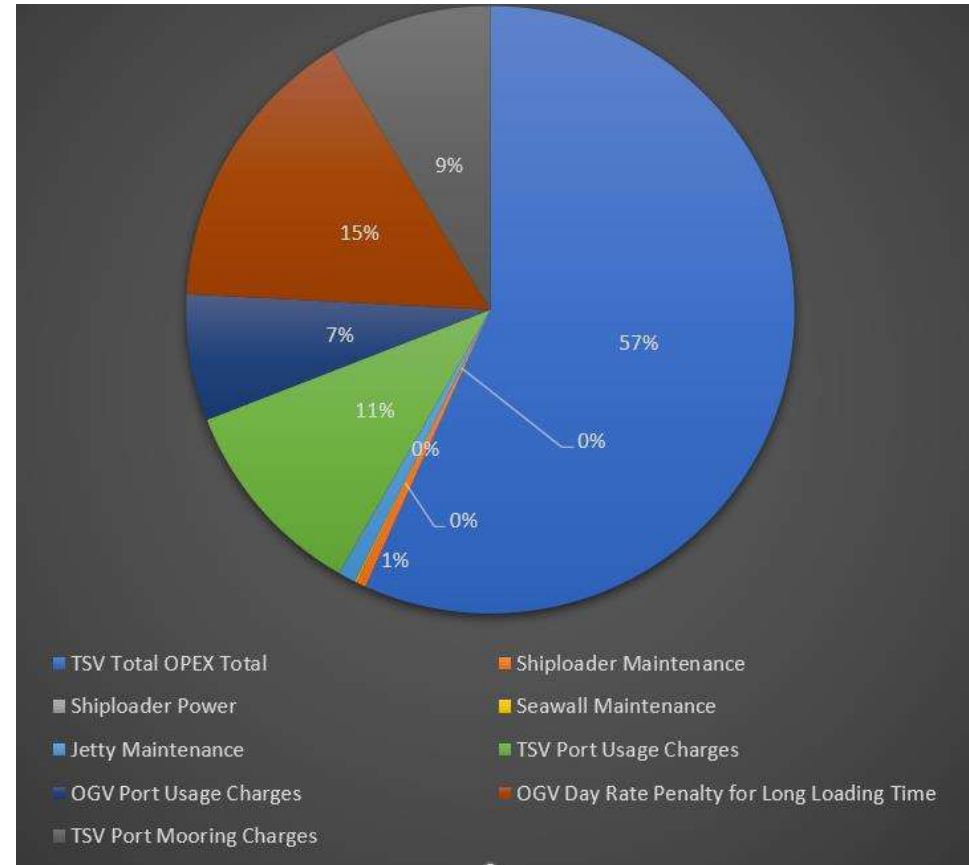
Cost Estimate

Model reported:

- Time in every activity
- Equipment utilisation

Operating Costs

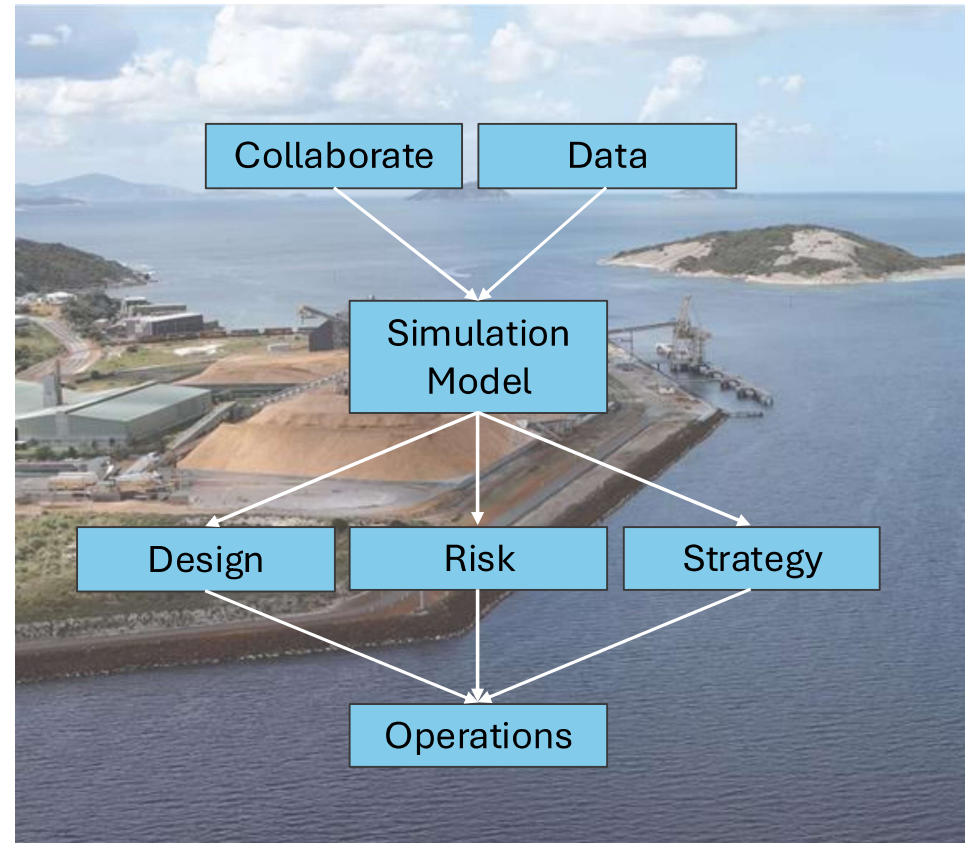
- TSV Fuel
- Personnel
- Ship loader power
- Port charges for TSV & OGV movements
- Penalties due to delays in OGV loading



Summary

Transshipment Throughput Modelling

- Part of a supply chain
- Model simulates complex interactions
- Coordination & multi-disciplinary collaboration
- Requires good data
- High confidence in system capacity
- Informs design, risks & commercial strategy
- Forecast for operational management





Thank you

